



Gebesa | CREATING AMAZING SPACES

PRIME

# INDEX

<b>4</b>	<b>DESKS &amp; TABLES</b> Tables .....4 Desks .....6 Conference.....8	<b>30</b>	<b>RECEPTIONS</b> Units .....30 Modular.....32
<b>10</b>	<b>FILING &amp; STORAGE</b> Credenza .....10 Pedestals .....12 Cabinets .....14 Lateral File.....16 Vertical File .....18 Bookcases.....20 Hutch .....22 Lockers .....24	<b>34</b>	<b>GROUPS</b> Curvilinear with Storage..34 Curvilinear with Hutch.....35 U-Group with Hutch .....36 L-Group with Hutch.....37 Curvilinear U-Group .....38 L-Desk.....39 Private L-Group .....40 4-User Station.....41 2-User Station.....42
<b>26</b>	<b>COMPLEMENTS</b> Complements.....26 Accessories.....28	<b>44</b>	<b>DIMENSIONS &amp; FINISHES</b> Dimensions.....44 Finishes.....47

Furniture color may vary from renderings.



# PRIME

Prime is a modular line that offers a wide range of configurations. Ergonomic work surfaces with laminated finishes and covers, and decorative edges will allow you to generate optimally productive work environments.

Within the Prime collection, you can find accessories such as storage for your receptions, key pieces to optimize your office, modules, and more. Reflect on your organization's personality and find beauty in your furniture with different shapes, colors, and textures.



# TABLES

PRIME



## PENINSULA TABLE

With the Peninsula Table, access a wide range of configuration styles and get an eye-catching design around which users can move safely, thanks to its rounded finishes and shapes.



## PENINSULA DESK 4" LEG

The straight and curved lines of this table gives flexibility for use in different ways. Place it next to the wall and save considerable space.



## EXTENDED CORNER CREDENZA

With the integration of the extended corner credenza, ensure that your configuration can create "L" angles, increase deck space and contribute to an effective station design.

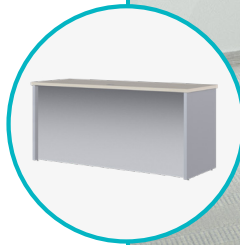
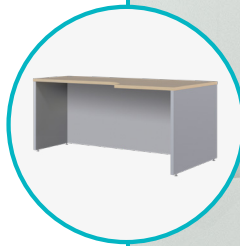
*Available with half or full modesty panel.*



## CREDENZA SHELL

The more amenities a job offers, the better employees will perform since they will not be distracted by discomfort from different elements, such as cables.

*Available with half or full modesty panel.*



*Furniture color may vary from renderings.*



# DESKS

PRIME



## BOW FRONT DESK SHELL

This desk can be installed in individual or collaborative offices. It is ideal if what is required is a flat work surface with a computer or other devices.

*Available with half or full modesty panel.*



## DESK SHELL

Its design gives a pleasing workspace to the eye without leaving functionality aside. Preserve order and practicality while using your gadgets on a day-to-day basis.

*Available with half or full modesty panel.*



## RETURN

Expand the worksurface! It has a functional structure, with a side panel that provides stability and a grommet to facilitate cable organization, keeping the workspace tidy.

*Available with half or full modesty panel.*



## BRIDGE

It provides an additional surface for placing objects, documents, or devices. The grommet helps keep the area organized and free from loose cables.

*Available with half or full modesty panel.*



Furniture color may vary from renderings.





Furniture color may vary from renderings.



# CONFERENCE

PRIME

## ROUND-END TABLE

This table features straight front edges, with two curved side lines designed to comfort users. Thanks to its dimensions, it allows closer interaction based on user orientation.



## BOAT-SHAPED TABLE

At Gebesa, we know the importance of pleasant space for holding meetings with your employees. Its shape provides a wide surface and adapts to the user's needs.



## ROUND TABLE

This table is ideal for small spaces due to its efficient and modern design. The cross base provides sturdiness and stability.





# — CREDENZA

PRIME

The credenza is perfect for open offices where users need considerable space to store their files and essential office items. Its shape is rectangular, so it can be placed on a long wall or behind a desk. The 2 or 4 Door Credenza will keep the office spacious and organized.

2-DOOR  
WITH SHELF



4-DOOR  
WITH SHELF



Furniture color may vary from renderings.

# PEDESTALS

PRIME

Furniture color may vary from renderings.



BBF Pedestals



FF Pedestals



Freestanding Pedestal



Mobile Pedestal



Hanging Box/File

## PRIME PEDESTALS

Our Pedestals are essential in any office, because most workers with administrative positions tend to deal with a large volume of paperwork daily which can contain confidential company information.

With this in mind, it is designed with a lock on the upper right side. Its coverless design is perfect for placing under desks and optimizing spaces to the max.





Furniture color may vary from renderings.



# CABINETS

PRIME



## 2-DOOR CABINET

Forget about having large amounts of papers stacked! Our 2-Door Cabinet allows you to control organization in your office. It is ideal to protect blueprints, folders, and important documents. It can also store papers and objects thanks to the adjustable shelf inside.

## CABINETS

Plan, organize and optimize. Having a well-distributed work area not only creates a more attractive aesthetic, it also helps users avoid visual distractors. Distribute your work objects in their interiors, making the most of the space by dividing it into zones.



# FILING

## PRIME

### 2-DRAWER LATERAL FILE

It responds to the need to file documents, office tools and personal objects in a secure and orderly manner.



### 3-DRAWER LATERAL FILE

It is perfect for holding the highest density in your storage. Its drawers allow you to keep your interiors protected from dust.



### MOUNTABLE COMBO FILE

Tasks are more varied than ever and we care about storage solutions being compatible with your needs and enhancing your work.





Furniture color may vary from renderings.



# FILING

PRIME



## 2-DRAWER VERTICAL FILE

They allow continuous access to documents thanks to its two drawers.



## 3-DRAWER VERTICAL FILE

They are ideal for any type of office, bringing organization and style to any area.



## 4-DRAWER VERTICAL FILE

They have a lock included at the top to take into account user security and that of their documents.



# BOOKCASES

PRIME



## OPEN BOOKCASE

Enhance the style of your office with our bookcase, and create a cozy atmosphere; combine warmth and organization thanks with visible interior shelves that allow easy access to the objects sheltered within. It has five large shelves that allow you to store anything without issue, or place decorative elements.

## BOOKSHELF

The half-open bookcase is your best option if what you are looking for is an innovative storage solution which prioritizes the optimization of space. Its dimensions make it ideal for compact offices. Choose from versions with 2 or 3 large spaces perfect for accommodating books, folders or any type of ornament. Its design will make any space look elegant.



*Furniture color may vary from renderings.*



# HUTCH

PRIME



## 2-DOOR HUTCH MOUNTED TO LATERAL FILE

Increase storage capacity and makes the most of hidden interiors to preserve a clean office aesthetic.

*Select between acrylic or laminated doors.*



## OPEN HUTCH\*

It helps save time by keeping the interiors in sight and by organizing your documentation in its mezzanine.

*Also available with 4 pigeon holes.*



## HUTCH WITH 2 DOORS AND 2 SHELVES

It has shelves and doors at the ends, allowing you optimal control over objects.

*Select between acrylic or laminated doors.*



## HUTCH WITH DOORS AND PIGEON HOLES

This is perhaps one of the most versatile accessories available. Integrate a new dynamic into your work area!

*Select between acrylic or laminated doors.*



## OPEN WALLMOUNT OVERHEAD

Customize your workstation according to your needs and add exhibition objects, books or documents.

*Also available with medium divisions.*

*\*Also available with sliding door.*



*Furniture color may vary from renderings.*



# LOCKERS

PRIME

## LOW PRESSURE LAMINATE LOCKER

Prime lockers concentrate the essence of what storage furniture should be. With spacious interiors and attractive design, they are highly adaptable to organizations.



Options: 1 to 5 doors



Upper door: full-hanging rod  
Lower door: half hanging rod



Options: 2 and 4 doors



Furniture color may vary from renderings.

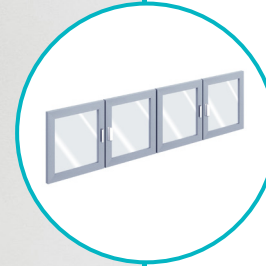
## LOW PRESSURE LAMINATE LOCKER - DOORS "L"

Create a modern storage area in a gym, or refine and configure as many lockers as you need in a collaborative office.



# COMPLEMENTS

PRIME



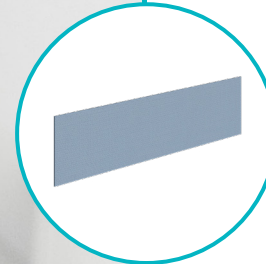
## DOORS - OPEN HUTCH (Acrylic/Laminated)

Adapt to your hutch and keep your objects protected from external agents.



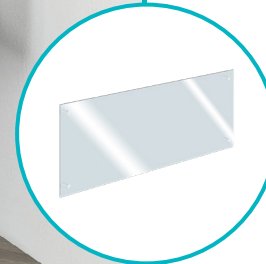
## DOORS - OVERHEAD (Acrylic/Laminated)

Adapt to your hutch and keep your objects protected from external agents.



## TACKABLE SCREEN

When clicking notes or tickets, improve the organization of your time, by keeping your pending tasks or important activities visible.



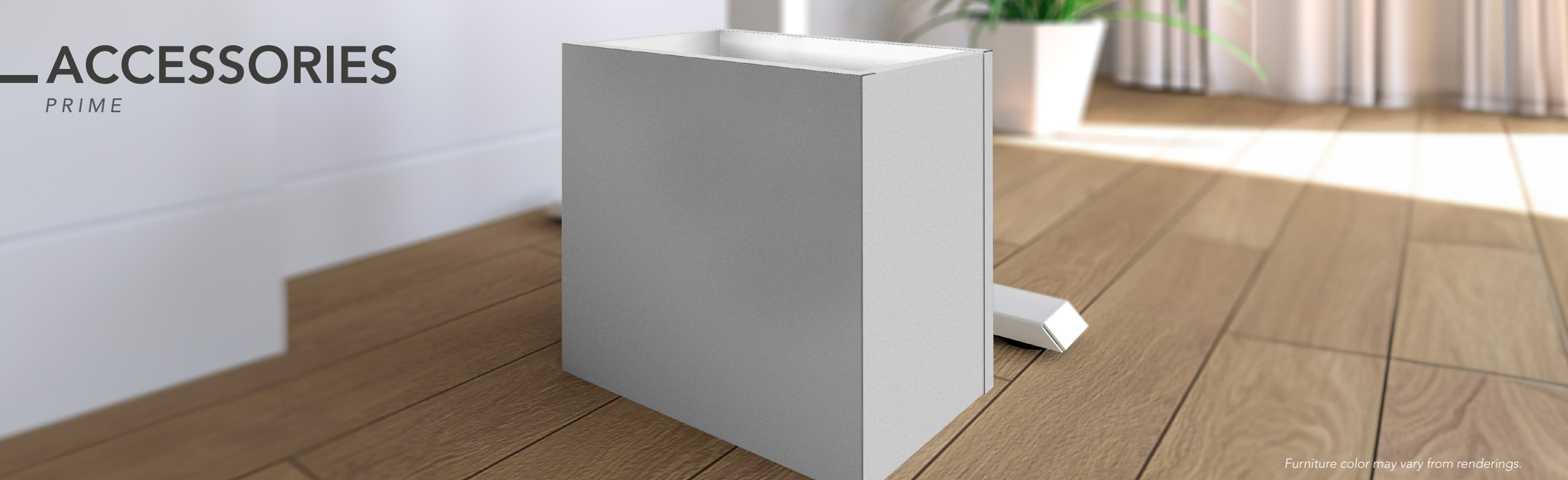
## ACRYLIC ACCENT FOR MODESTY PANEL

Preserve the lighting effects of your office with its semi - translucent finish. Never lose sight of what is happening around you.



# ACCESSORIES

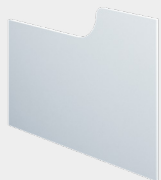
PRIME



Furniture color may vary from renderings.



*"L" support.*



*Full-Height  
Screen*



*Paper Tray*



*Laminate  
Keyboard*



*Plastic Keyboard  
w/mouse platform*



*Laminate  
Wastebasket*

At Gebesa we recognize the capacity for improvement and constant evolution in each space, so we integrate a selection of innovative and practical accessories each with qualities, dimensions and materials that manage to optimize task performance, space management and increase the feeling of general comfort in workspaces.

The type of office you have defines the accessories that are necessary to enhance productivity and raise the usefulness of each space. Place your keyboard in the proper position to maintain a comfortable posture. Slide the keyboard holder when not in use and keep an area clear with all accessories in order.





Furniture color may vary from renderings.

# RECEPTIONS

PRIME

Just as a face represents a person, the reception area characterizes an office. Whether you receive visits from collaborators, aspirants, or partners, a correct reception environment will improve the perception of your office as well as the impact on your customers while creating a more robust business relationship.

RECEPTION UNIT



RECEPTION DESK



CURVED RECEPTION UNITS



Upper level



Upper level module



Module



Double



# RECEPTIONS

PRIME

## MODULAR REC.

Option A



## MODULAR REC.

Option B



## MODULAR REC.

Option C







## U-GROUP W/HUTCH & STORAGE

- 1.- 2-Drawer lateral file
- 2.- Wardrobe cabinet
- 3.- 2 Door hutch on top of lateral file
- 4.- Open hutch w/pigeon holes
- 5.- 4-door kit for open hutch
- 6.- Credenza
- 7.- Peninsula table
- 8.- BBF pedestal



## U-GROUP WITH HUTCH

- 1.- Mountable combo file
- 2.- Extended corner credenza
- 3.- Bow-front desk shell
- 4.- 3-Drawer combo cabinet
- 5.- Bridge w/full modesty panel
- 6.- Open hutch with sliding door





## U-GROUP WITH HUTCH

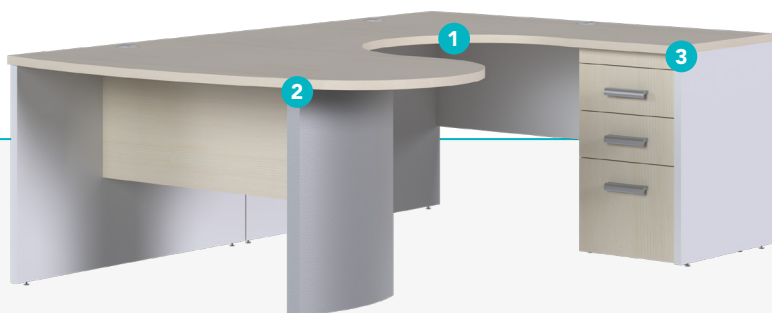
- 1.- Open hutch w/pigeon holes
- 2.- 4-Door kit for open hutch
- 3.- Credenza table
- 4.- Peninsula desk
- 5.- BBF pedestal



## L-GROUP WITH HUTCH

- 1.- Desk shell w/full modesty panel
- 2.- Return with half modesty panel
- 3.- Open hutch with sliding door
- 4.- BBF pedestal





## CURVILINEAR U-GROUP

- 1.- Credenza table
- 2.- Peninsula desk
- 3.- BBF pedestal



## L-DESK

- 1.- Return surface
- 2.- "D" table
- 3.- BBF pedestal





## PRIVATE L-GROUP

- 1.- Diagonal worksurface
- 2.- Screen for L-desk
- 3.- BBF pedestal



## 4-USER STATION

- 4 L-desk





## 2-USER STATION

- 1.- 2 Diagonal worksurface
- 2.- L-support
- 3.- 2 BBF pedestal



Furniture color may vary from renderings.



GROUPS

- U-group with hutch and storage: 135 x 95 x 71"
- Curvilinear u-group with hutch: 105 x 106 x 71"
- U-group with hutch: 71 x 95 x 71"
- L-group with hutch: 83 x 71 x 71"
- Curvilinear u-group: 59 x 91 x 30"
- L-Desk: 60 x 65 x 30"
- Private L-Group: 59 x 59 x 43"
- 4-User Station: 118 x 118 x 43"
- 2-User Station: 118 x 59 x 30"

TABLES

- Peninsula Table: 59 x 45 x 30" | 65 x 45 x 30" | 71 x 45 x 30"
- Credenza shell: 47 x 24 x 30" | 60 x 24 x 30" | 65 x 24 x 30" | 72 x 24 x 30"
- Peninsula Desk: 59 x 30 x 30" | 65 x 30 x 30" | 71 x 35 x 30"
- Ext. corner credenza: 65 x 35 x 30" | 71 x 35 x 30"

DESKS

- Bow front desk: 59 x 35 x 30" | 65 x 35 x 30" | 71 x 35 x 30"
- Desk shell: 59 x 30 x 30" | 65 x 30 x 30" | 71 x 30 x 30" | 71 x 35 x 30"
- Returns: 35 x 24 x 30" | 41 x 24 x 30" | 47 x 24 x 30"
- Bridge: 35 x 24 x 30" | 41 x 24 x 30" | 47 x 24 x 30"

CONFERENCE TABLES

- Round-end: 95 x 43 x 30"
- Boat-shaped: 71 x 35 x 30" | 120 x 47 x 30" | 144 x 47 x 30"
- Laminate base: 48 x 30"

FILING AND STORAGE

- Credenzas: 72 x 24 x 30"
- Hanging box/file: 19 x 20.5 x 16"
- Pedestals: 16 x 18 x 28" | 16 x 28 x 28"
- Mobile Pedestal: 16 x 18 x 23"
- Freestanding Pedestal: 19 x 19 x 28"
- 2-Door Cabinet: 30 x 24 x 29" | 30 x 20 x 28"
- Lateral File: 30 x 24 x 29" | 30 x 24 x 41" | 30 x 20 x 28"
- Mountable Combo File: 30.8 x 20 x 28"
- Vertical file: 20 x 24 x 30" | 20 x 24 x 41" | 20 x 24 x 53"
- Cabinets: 33 x 24 x 71"
- Open bookcases: 33 x 12 x 71" | 33 x 14 x 71"
- Bookshelf: 33 x 14 x 47" | 33 x 14 x 30"
- Lockers: 14 x 15 x 70"
- Open wallmount overhead (14" depth x 20" height):  
Widths: 48" | 42" | 36" | 33" | 30" | 24"

HUTCH

- 2-shelf open hutch: 29 x 14 x 41"
- 2-door mounted hutch: 29 x 23 x 41"
- Open hutch: 58 x 14 x 41" | 64 x 14 x 41" | 70 x 14 x 41" | 82 x 14 x 41"
- 2 doors and 2 shelves: 58 x 14 x 41" | 64 x 14 x 41" | 70 x 14 x 41" | 82 x 14 x 41"

WORKSURFACES

- Straight: 24 x 72" | 24 x 60" | 24 x 48" | 24 x 36"
- Counter worksurfaces: 14 x 72" | 14 x 60" | 14 x 48" | 14 x 36"
- L-counter worksurfaces: 14 x 42 x 42"
- Diagonal worksurface: 36 x 36"



RECEPTIONS

- Reception unit: 67" x 67" x 43"
- Reception Desk: 67" x 28" x 43"
- Curved - Upper level: 148" x 65" x 43"
- Curved - Upper level Module: 93" x 37" x 43"
- Module: 93" x 37" x 30"
- Double: 148" x 65" x 43"

ACCESSORIES

- "L" Support: 16" x 28"
- Full-Height Screen: 60" x 44"
- Paper Tray: 11" x 17" x 7"
- Laminate Wastebasket: 8" x 14" x 13"
- Plastic Keyboard: 12" x 28"
- Laminate Keyboard: 9" x 20"

PANELS

- Front Panel: 36" x 29" | 48" x 29" | 60"x 29" | 72" x 29"
- Front Panel: 36" x 40" | 48" x 40" | 60"x 40" | 72" x 40"
- Recessed-End Panel: 16" x 28"
- Full-End Panel: 25" x 40"
- Diagonal L-Support Kit: 28" | 40"

Note: Depth and width shown in nominal dimensions.

	GLASS	LOW PRESSURE	ACRYLIC	POWDER COATING <sup>1</sup>	FABRIC
Desks/Tables		●		●	
Credenzas		●		●	
Return/Bridge		●		●	
Conference Tables		●		●	
Filing and Storage		●		●	
Door Kits		●			
Aluminum-framed Doors			●		
Tackable Screens					●
Lockers		●		●	
Accessories		●			
Receptions		●		●	
Straight Worksurface		●			
Diagonal Worksurface		●			
Counter Worksurfaces	●	●			

1.- For structure only. Available Colors: Black, Platinum, R.M. Gray, Textured Aluminum.

# LOW PRESSURE LAMINATE



# POWDER COATING



Furniture color may vary from images.



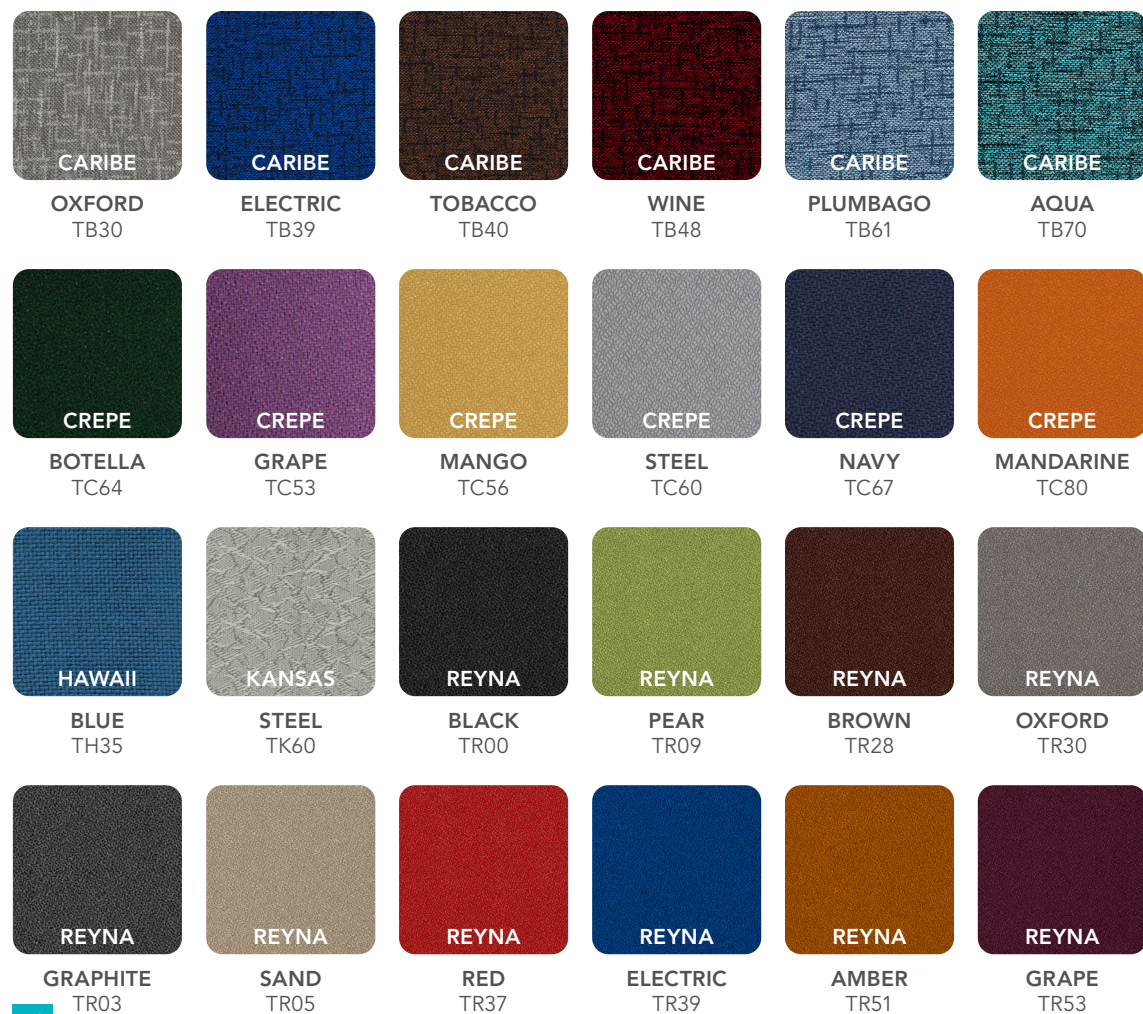
# FABRICS

Furniture color may vary from images.

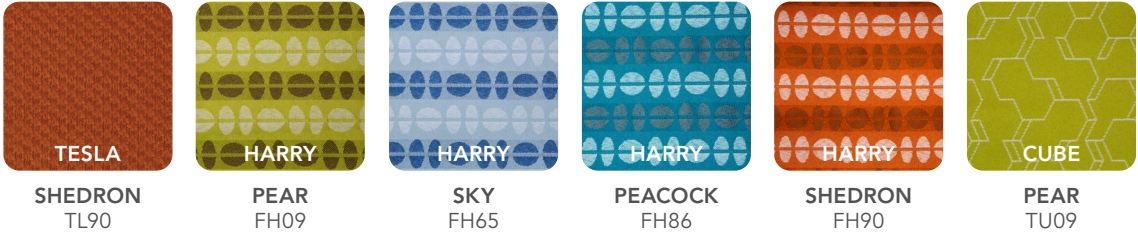
## FABRIC GRADE A



## FABRIC GRADE B







FABRIC GRADE C



FABRIC GRADE E



Furniture color may vary from images.



